

EMI/EMC FILTER

TB6 SERIES



FEATURES

- 3-Phase Filters(Potted with Epoxy Resin)
- Remarkable attenuation for high voltage impulse
- Good shield effect by using metal case.
- Excellent filtering characteristics for both differential mode and common mode.

APPLICATIONS

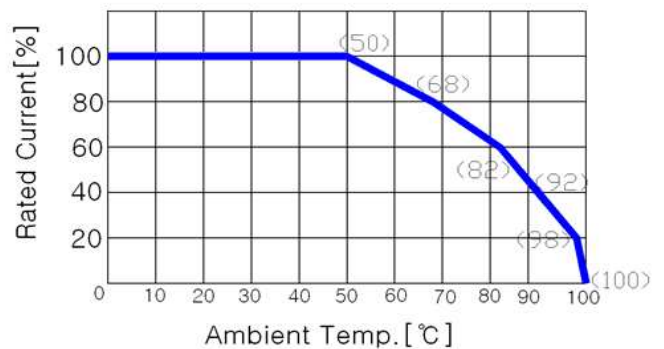
- Industrial equipment such as CNC Machine, Inverter, Converter, Telecommunication equipments, FA equipments Elevator.

SPECIFICATIONS

Model	Rated Voltage AC [V]	Rated Current	Voltage Drop Max [V] (Each Phase)	Temperature Rise [°C]
TB6-B040As	3ΦX 440	40	1.0	50
TB6-B060LAs		60		
TB6-B080LAs		80		
TB6-B100LAs		100		
TB6-B150LAs		150		
TB6-B200LBs		200		
TB6-B250LBs		250		
TB6-B400LBs		400		

- Many variations in X and Y capacitor value are available with approvals. For the details, consult with local agent.

Note: Test Voltage: 3000V DC for 1 minute, line to earth
 2100V DC for 1 minute, line to line (without Resistor)
 Insulation Resistance: 300 MΩ minimum at 100V DC, line and ground.
 Weight: 2,2Kg for TB6-B040As
 4.5Kg for TB6-B060LAs/B080LAs
 4.3Kg for TB6-B100LAs
 6.0Kg for TB6-B150LAs
 8.2/8.5Kg for TB6-B200LBs/B250LBs
 12.2Kg for TB6-B400LBs
 Ambient Temperature Range: -25°C to +50°C max
 Storage Temperature Range: -25°C to +100°C



Model Number Construction

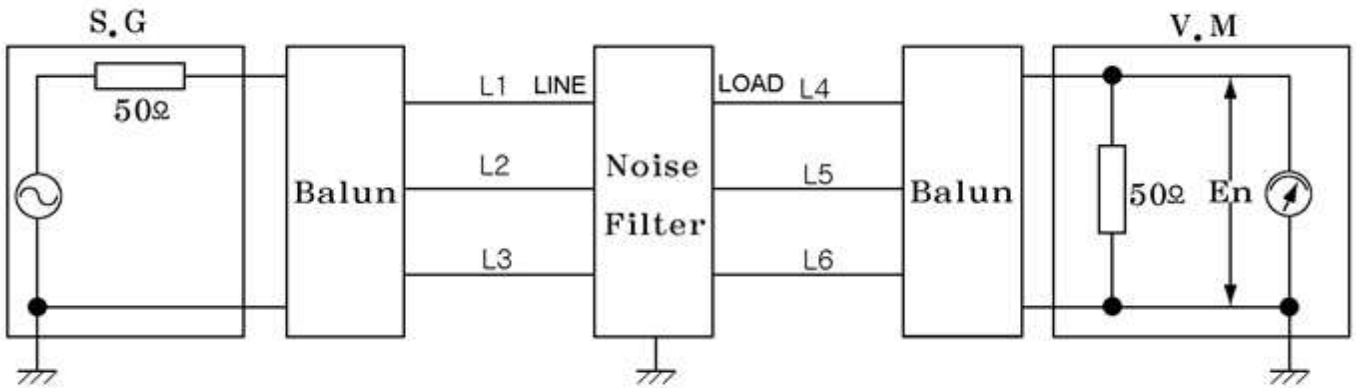
TB6-
 |
 Series name
 (3Phase, 3Line Filter)

B
 |
 Input/Output
 (B = Terminal Block)

040
 |
 Rated Current
 040 = 40 A
 060 = 60 A
 080 = 80 A
 150 = 150 A
 200 = 200 A
 250 = 250 A
 400 = 400 A

LAs
 |
 Circuit Stage
 LAs = 1 Stage
 LBs = 2 Stage

● Attenuation Measuring Method



OSC Level: 0 dB

$$\text{Insertion Loss} = -20\log(E1/E2)[\text{dB}]$$

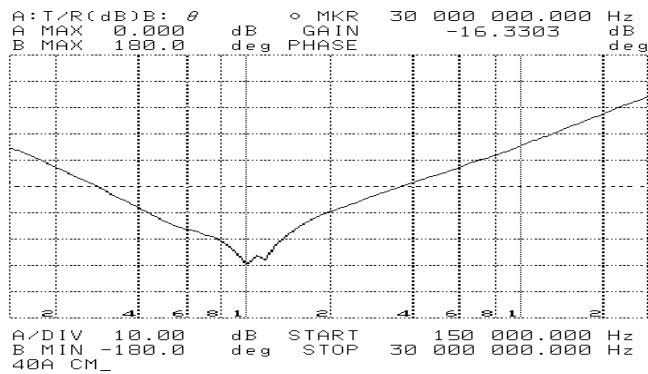
E1 : Level with the Noise Filter in the circuit.

E2 : Level without the Noise Filter in the circuit.

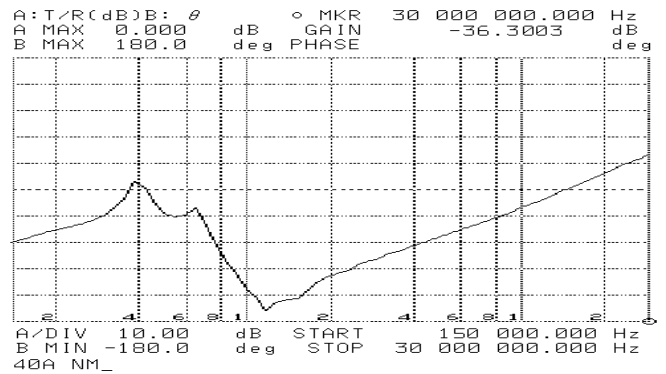
● Attenuation Characteristics

TB6-B040As

COMMON MODE

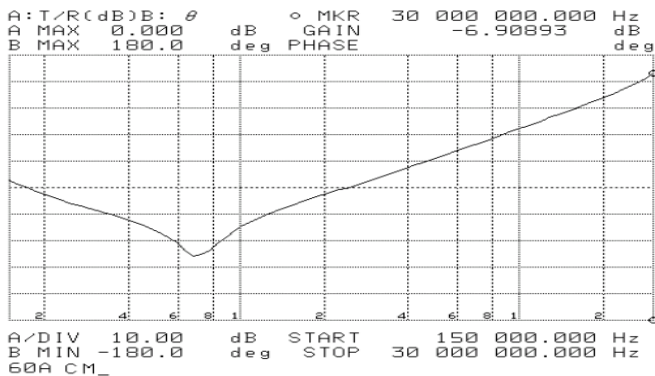


NORMAL MODE

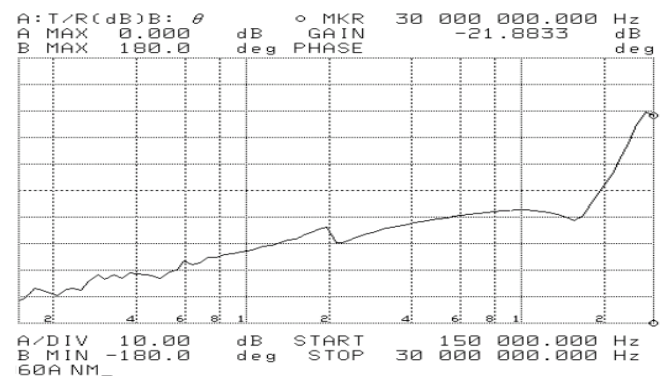


TB6-B060LAs

COMMON MODE

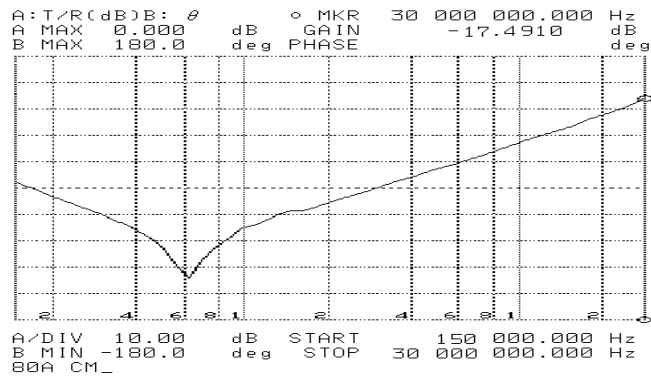


NORMAL MODE

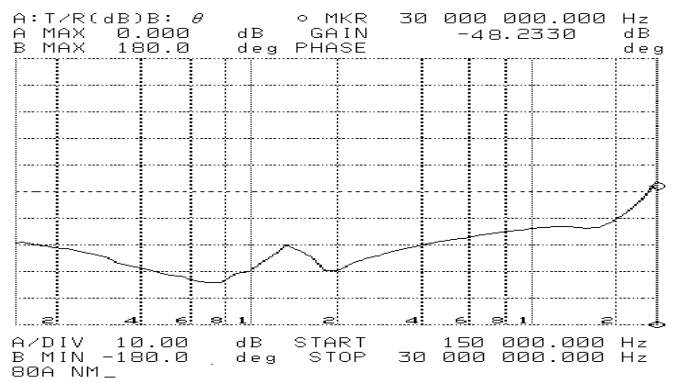


TB6-B080LAs

COMMON MODE

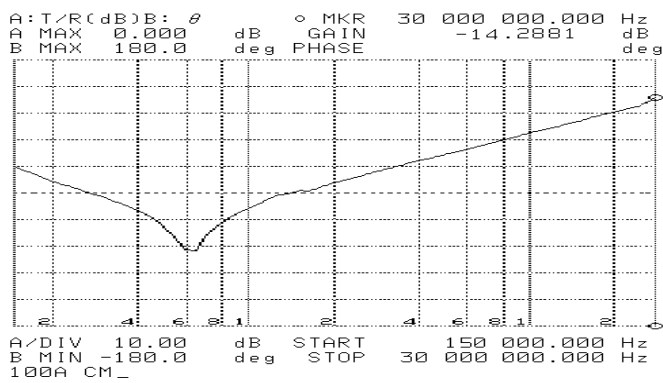


NORMAL MODE

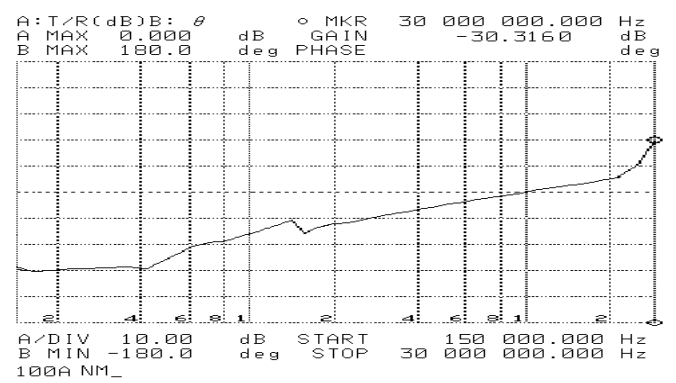


TB6-B100LAs

COMMON MODE

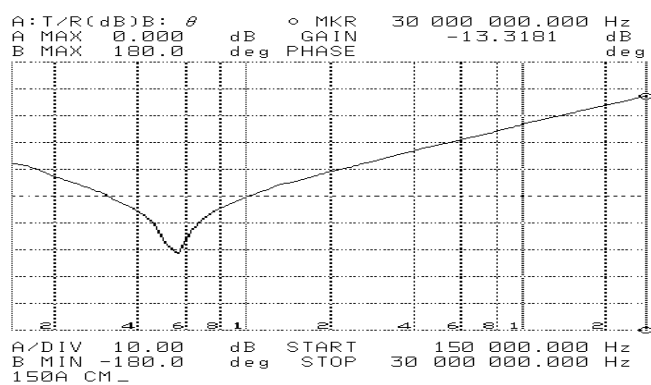


NORMAL MODE

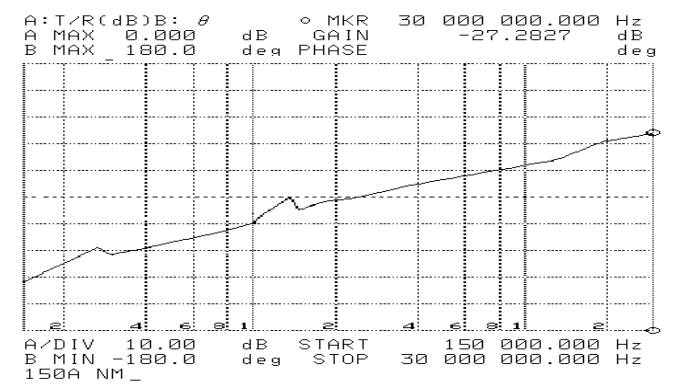


TB6-B150LAs

COMMON MODE

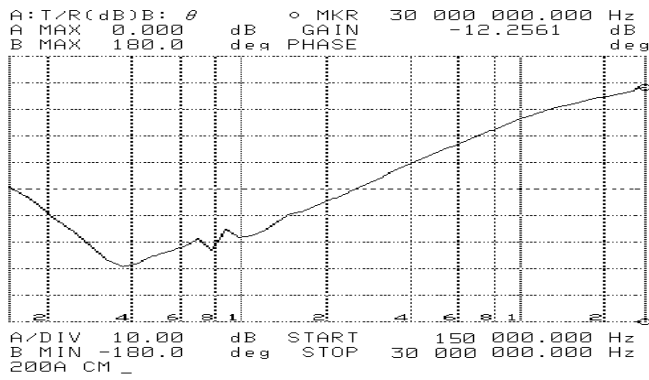


NORMAL MODE

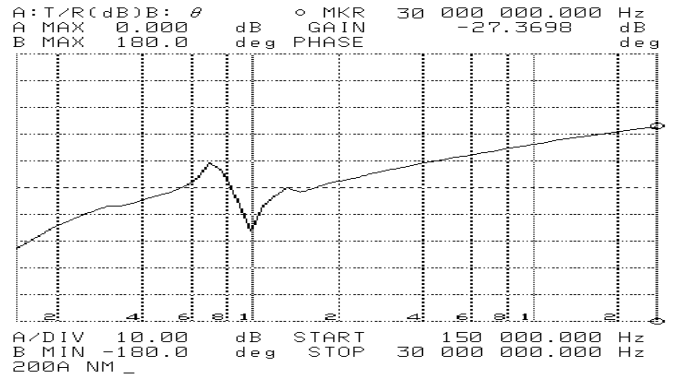


TB6-B200~250LBs

COMMON MODE

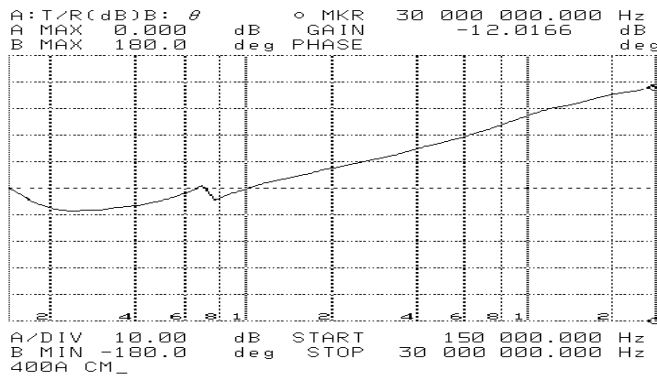


NORMAL MODE

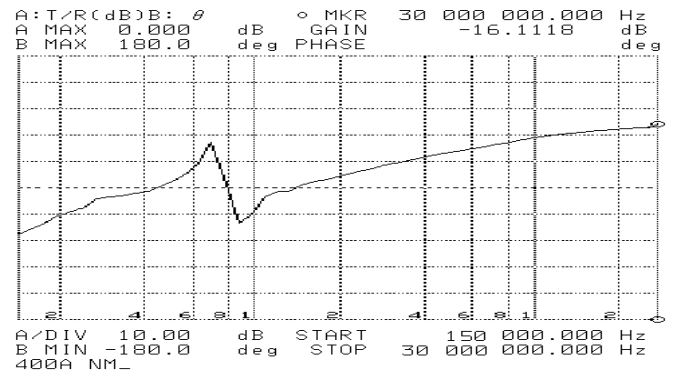


TB6-B400LBs

COMMON MODE

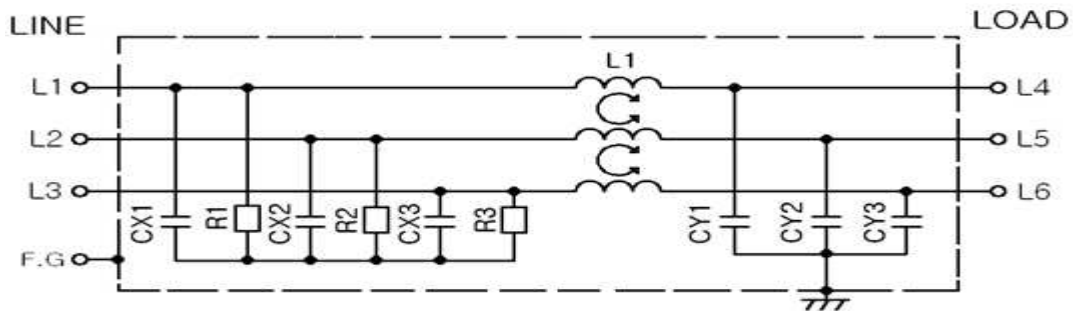


NORMAL MODE

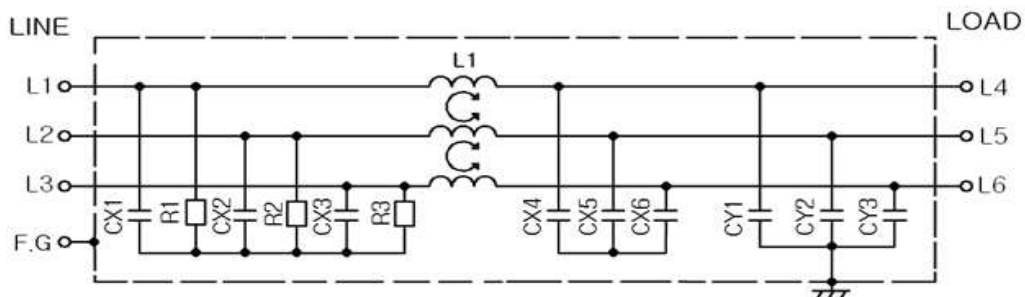


● Circuit Diagram

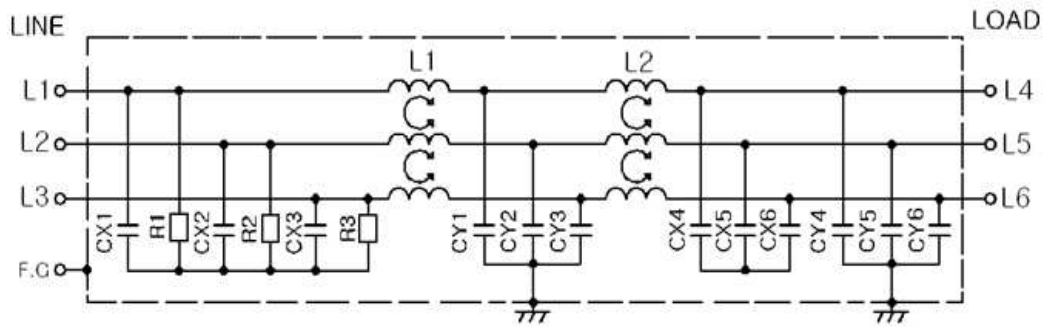
Only TB6-B040As



TB6-B060LAs ~ TB6-B150LAs

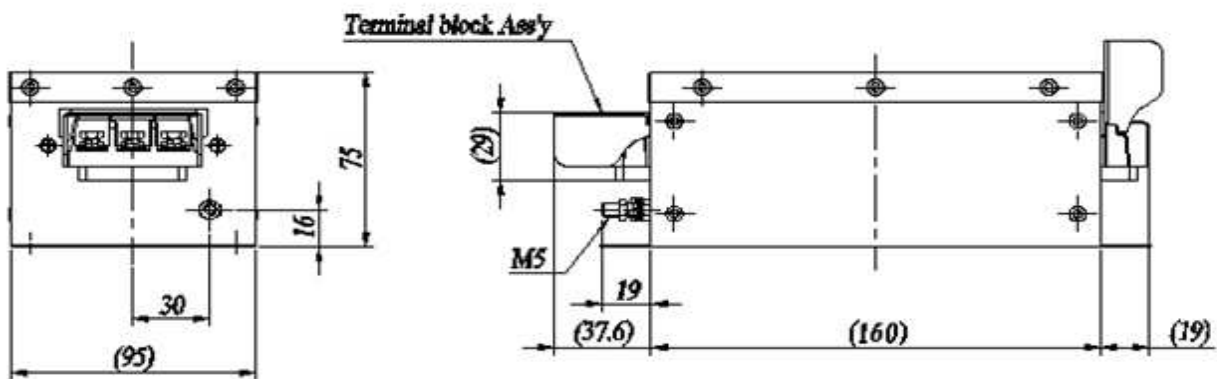
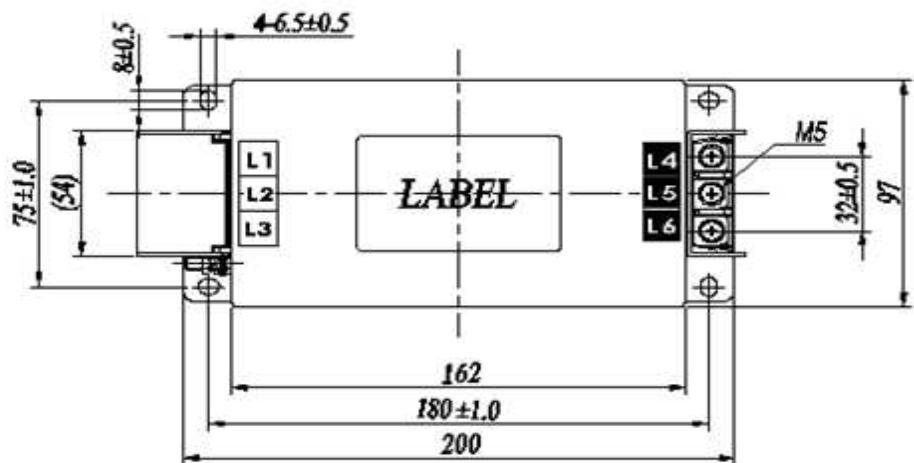


TB6-B200LBs ~ TB6-B400LBs

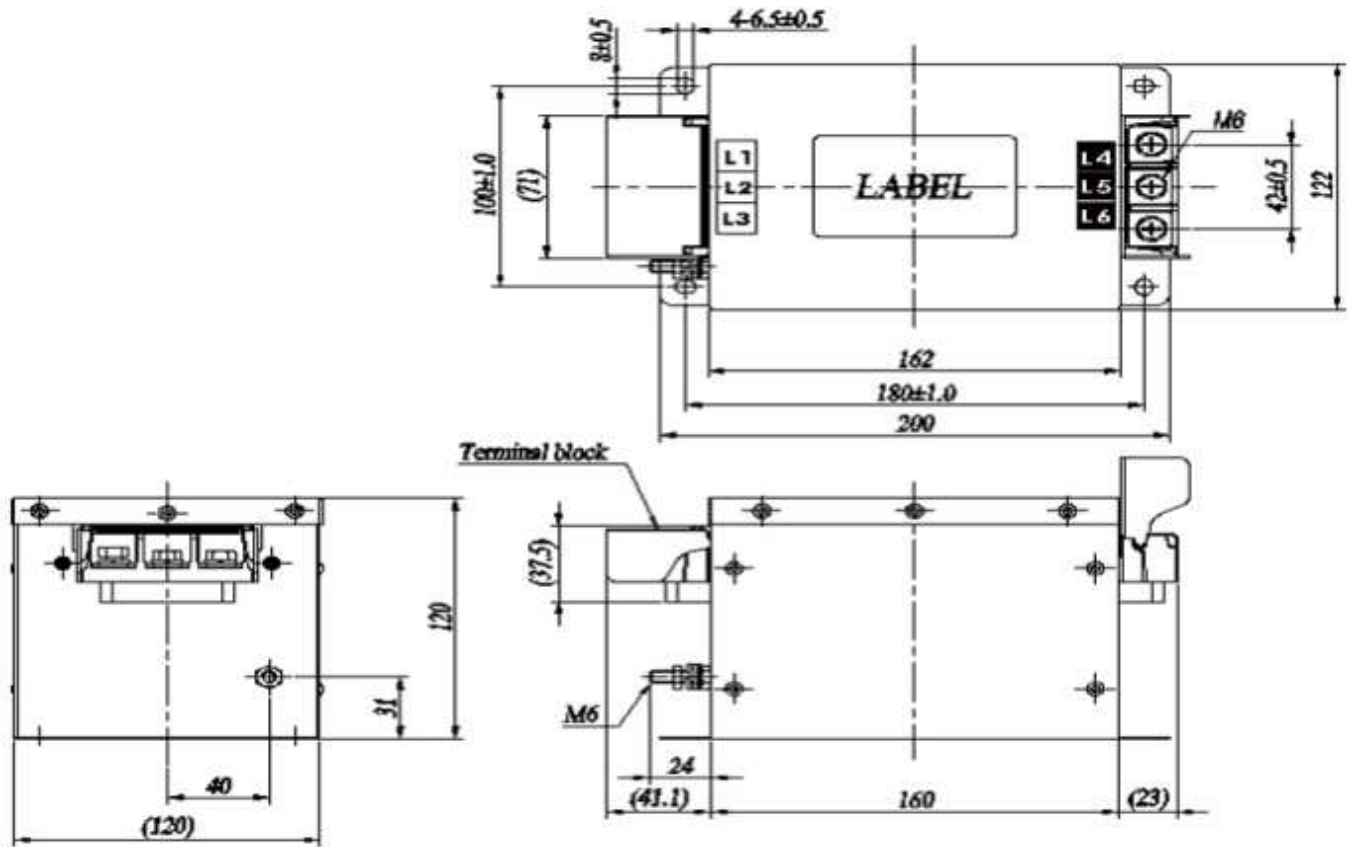


● Shapes and Dimensions

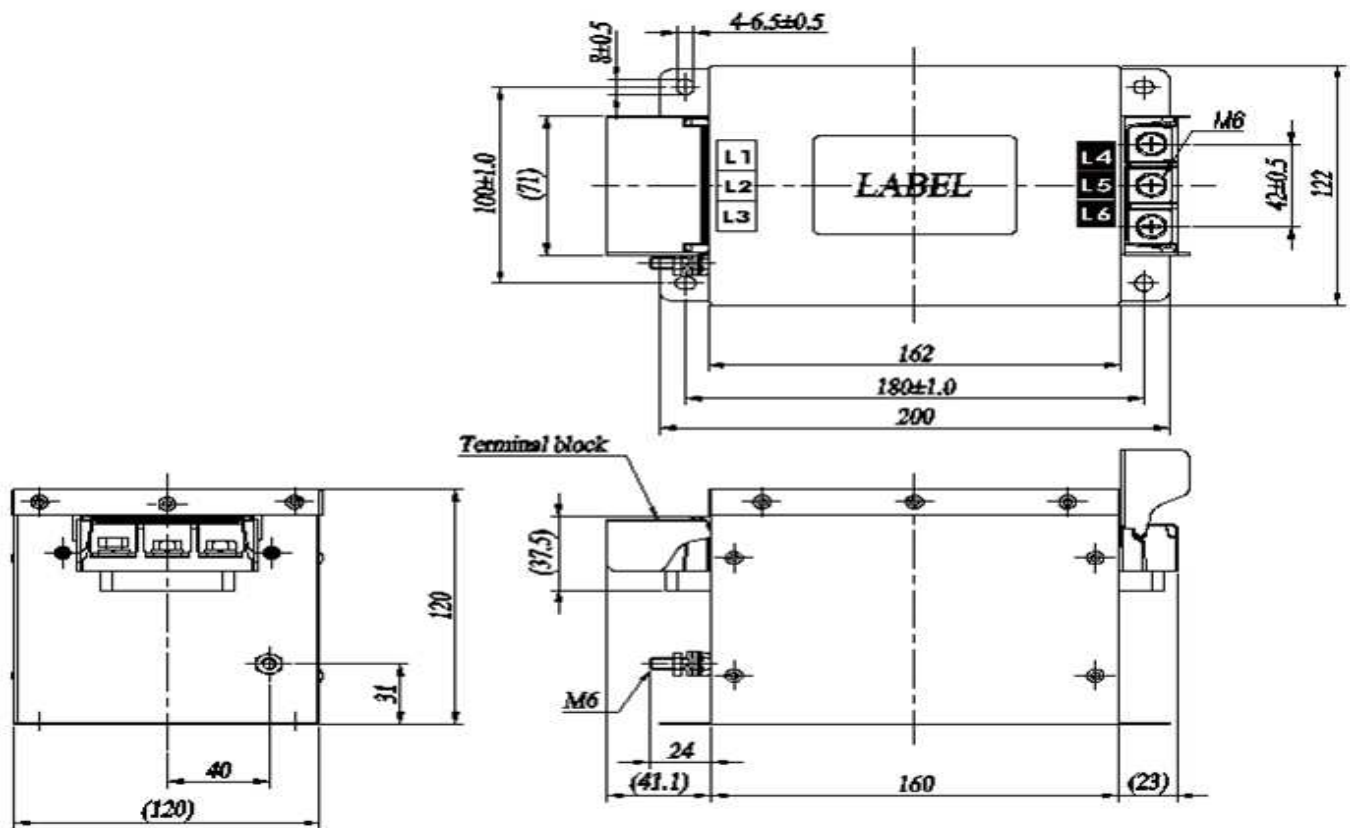
TB6-B040As



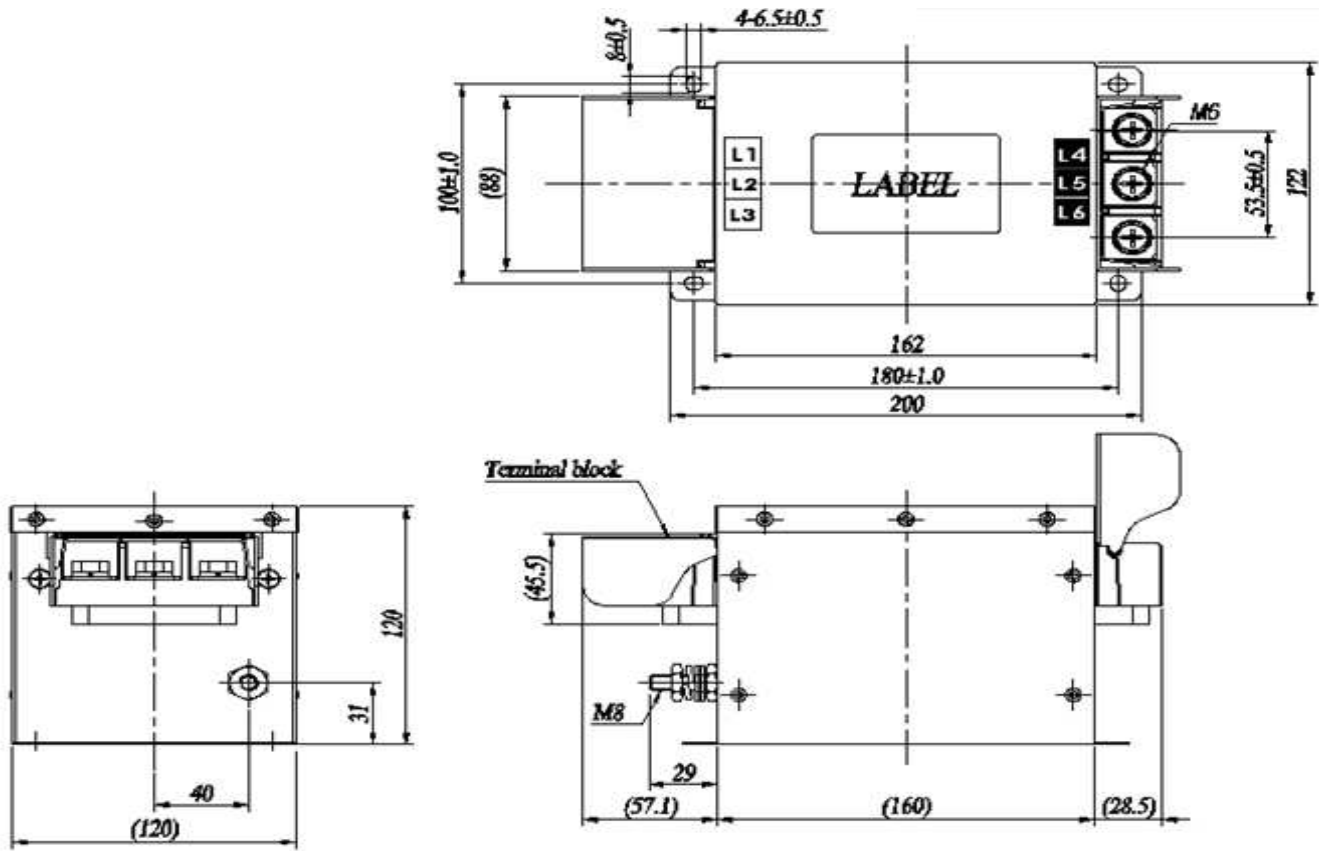
TB6-B060LAs



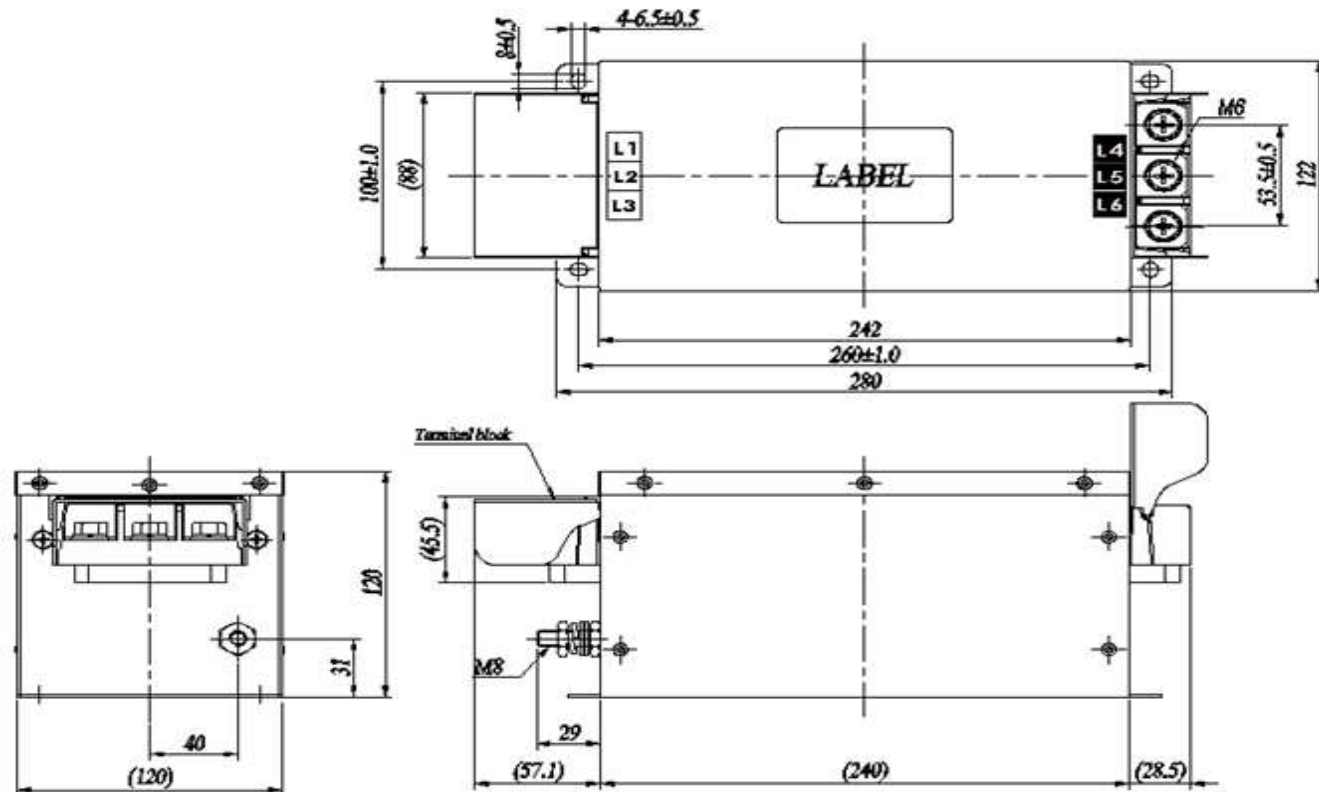
TB6-B080LAs



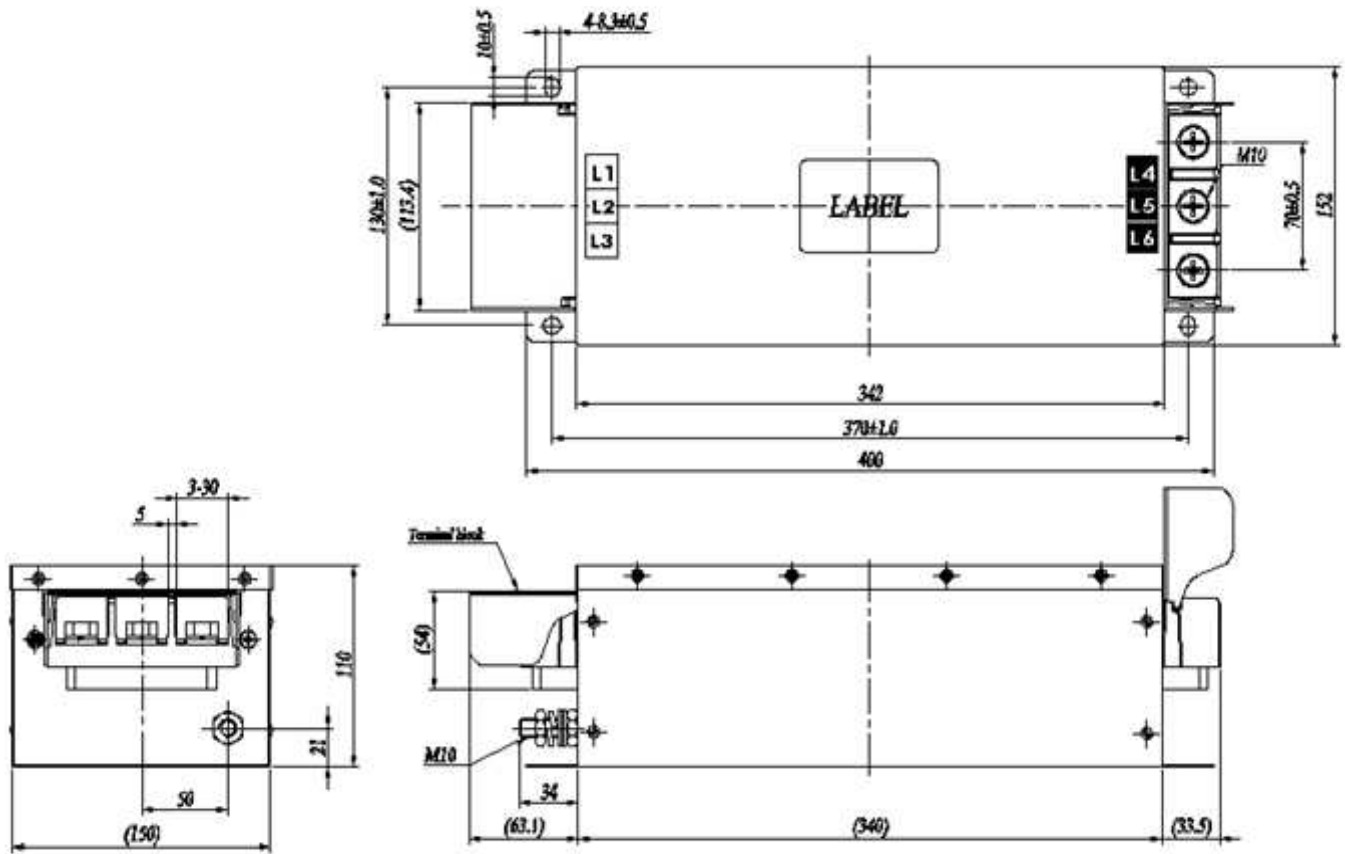
TB6-B100LAs



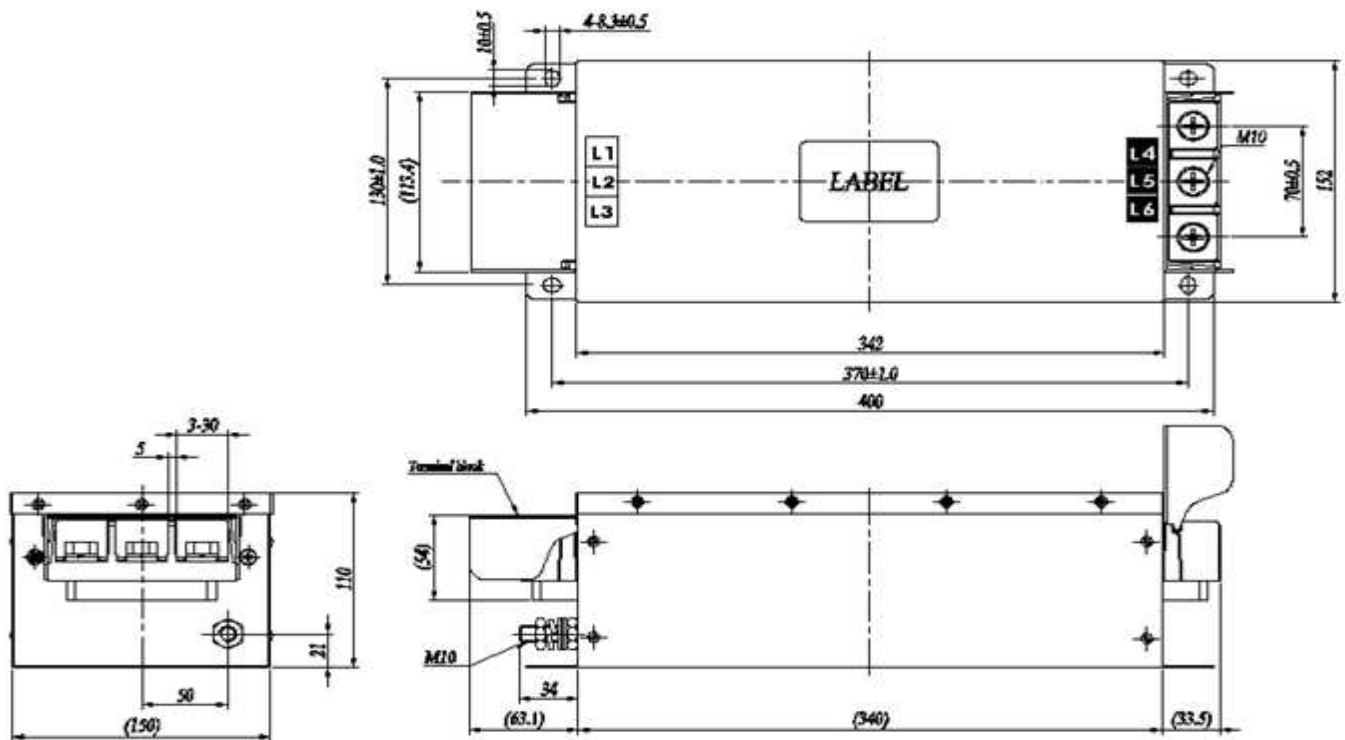
TB6-B150LAs



TB6-B200LBs



TB6-B250LBs



TB6-B400LBs

