



# Specification For Delivery

CUSTOMER

—

PART NUMBER

## XSG-1202000HEK

A0

Customer Approval			
担当者	审核	承认	公司承认章

SALES



P/N

XS-S2103114

ENGINEER



RESPONSIBILITY



# Table of contents

SAFETY STANDARD.....	P3
INPUT CHARACTERIST.....	P3
OUTPUT CHARACTERIST.....	P4
PROTECTION FUNCTION.....	P5
ENVIRONMENTAL REQUIREMET.....	P5、 6
EMC STANDARDS.....	P7
MAJOR MEASURE EQUIPMENT.....	P7
PRODUCT OUTLINE .....	P8
DC CORD.....	P9
RATING LABEL.....	P10
PACRING.....	P11

## UPDATE REV.

REV	UPDATE	DATE	PRERARATOR
original		2021.03.11	



## 1、 SAFETY STANDARD:

1.1 The green mode power supply shall be certified by the following international regulatory standards:

<input type="checkbox"/>		Country	CertifiedStatus	Standard
<input type="checkbox"/>	PSE	Japan	APPROVED	J60950, J55022
<input type="checkbox"/>	UL	USA	APPROVED	UL 60950-1: 2007
<input type="checkbox"/>	cUL	CAN	APPROVED	CAN/CSA-C22.2 No. 60950-1 (2007)
<input type="checkbox"/>	FCC	USA	APPROVED	Part 15 Class B
<input type="checkbox"/>	CE	Europe	APPROVED	EN 55032:55035/EN 60950-1/EN 61558-1/EN 61558-2-16
<input type="checkbox"/>	GS	Europe	APPROVED	EN 60950-1/EN 61558-1/EN 61558-2-16/AfPGS 21
<input type="checkbox"/>	BS	UK	APPROVED	BS EN 60950-1/BS EN 61558-1/BS EN 61558-2-16
<input type="checkbox"/>	SAA	Australia	APPROVED	AS/NZS 60950-1:2011& AS/NZS 3112:2011
<input type="checkbox"/>	CCC	CN	APPROVED	GB4943-2001,GB1317625.1-2003
<input checked="" type="checkbox"/>	KC	KC	APPROVED	HU10898-16001C

## 2、 INPUT CHARACTERIST :

### 2.1

INPUT VOLTAGE RANGE: **90Vac** to **264Vac**.

### 2.2

RATED INPUT VOLTAGE: **100Vac** to **240Vac**.

### 2.3

INPUT FREQUENCY RANGE: **47Hz** to **63Hz**.

### 2.4

INPUT CURRENT: **0.8A** max. (I/P100-240Vac).

### 2.5

INRUSH CURRENT: **50A** max. at **100-240Vac** input for a cold start at 25°C.



### 3、 OUTPUT CHARACTERIST:

#### 3.1 Power output

RATED OUTPUT	Min. Load	Rated Output Load	Output power	No Load Power consumption
12 VDC	0 A	2 A	24W	0.1W

#### 3.2 Combined Load

RATED OUTPUT	Min. Load	Rated Output Load	Line Regulation	Load Regulation
12 VDC	0 A	2 A	±3%	±5% (11.4V-12.6V)

#### 3.3

Higher than 86.20 % at 100-240Vac input and output (25%, 50%, 75% & 100% load.)

#### 3.4 Ripple and Noise:

Under nominal voltage and nominal load,the ripple and noise are as follows when measure with Max.Bandwidth of 20MHz and Parallel 10uF/0.1uF,crossed connected at testing point.

<u>Voltage</u>	<u>Ripple and Noise(Max.)</u>
+12 VDC	≤200mV p-p

#### 3.5 Turn on delay time:

3Second Max.at 115Vac input and output Max.load.

#### 3.6 Hold up time:

5 mS Min.at 115Vac input and output Max.Load.

#### 3.7 ELECTRIC WITHSTANDING STRENGTH(HI-POT)

Primary to Secondary AC3300V/10mA , 1 minute for type test. 3 second for production.

#### 3. Overshoot:

10% Max.When power supply at turn or turn off.



#### 4、 PROTECTION FEATURE :

##### 4.1 OVER - CURRENT PROTECTION:

The green mode power supply shall be hiccupped when any output operating in overload condition(set@ Max load 110~130% ) under any line condition for an indefinite period of time. The power supply shall be self - recovery when the fault condition is removed.

##### 4.2 SHORT CIRCUIT PROTECTION:

The power supply shall be hiccupped and no damage shall occur when any output operating in a short circuit condition under any line condition for an indefinite period of time. The power supply shall be self - recovery when the fault condition is removed.

#### 5、 ENVIRONMENTAL CONDITIONS:

##### 5.1 OPERATING:

The power supply shall be capable of operating continuously in any mode without performance deterioration in the following environmental conditions.

##### 5.1.1

Ambient Temperature: 0°C ~ 40°C

##### 5.1.2

Relative Humidity: 10% ~ 90%

##### 5.2 Vibration

Operating: IEC 721-3-3 3M3 5~9Hz,A=1.5mm

Acceleration (9~200Hz,Acceleration 5m/S<sup>2</sup>)



### 5.3 Cooling:

The power supply will operate with convection cooling. Blocking of vents must not cause damage to The power supply.

### 6、 Storage conditions:

The power supply shall be capable of withstanding the following environmental conditions extended periods of time, without sustaining electrical or mechanical damage and subsequent operational deficiencies:

#### 6.1.1

Storage Temperature: - 30°C ~ 70°C

#### 6.1.2

Relative Humidity: 10% ~ 90%

#### 6.2.3 Vibration and Shock:

The power supply shall be designed to withstand normal transportation vibration per MIL-STD-810D, method 514 and procedures X, as it s mounted in the chassis assembly and packed for shipping.

### 7、 RELIABILITY AND QUALITY CONTROL:

#### 7.1 BURN-IN

The power supply shall undergo a minimum of 2 hours Burn-In test under full load at 40°C ~ ±5°C

#### 7.2 COMPONENT DERATING:

Semiconductor junction temperatures shall not exceed the manufacturer ' s maximum thermal rating.



## 8、 EMC STANDARDS:

### 8.1 EMI STANDARDS:

The power supply met the radiated and conducted emission requirements for FCC CLASS B.

### 8.2 EMS STANDARDS:

The power supply shall meet the following EMS standards:

EN 55035: 2017; Part 15 Subpart B, IC ICES-003

## 9、 Energy Saving (Level VI / Level 6) :

9.1 CEC Test Report (CEC Table U-2 Standards for Power Supplies Effective July 1, 2008)

9.2 EUP Test Report (COMMISSION REGULATION (EC) No 278/2009)

9.3 MEPS (AS/NZS 4665.2-2005)

## 10、 INSULATION RESISTANCE:

Input to output: 50M OHM(500VDC)

## 11、 LEAKAGE CURRENT:

The leakage current shall be less than 0.25mA for class II when power supply is operated maximum input voltage and maximum load.

## 12、 MAJOR MEASURE EQUIPMENT:

A. AC SOURCE : AFC - 500W

B. POWER METER : CHROMA 2100

C. ELECTRONIC LOAD : PRODIGIT 3310C

D. OSCILLOSCOPE : TDS-2012B

E. DIGITAL MULTIMETER : Fluke 4.5

F. DC POWER : WYK - 6030

G. HI - POT TESTER : LANKE ELECTRONICS 7112

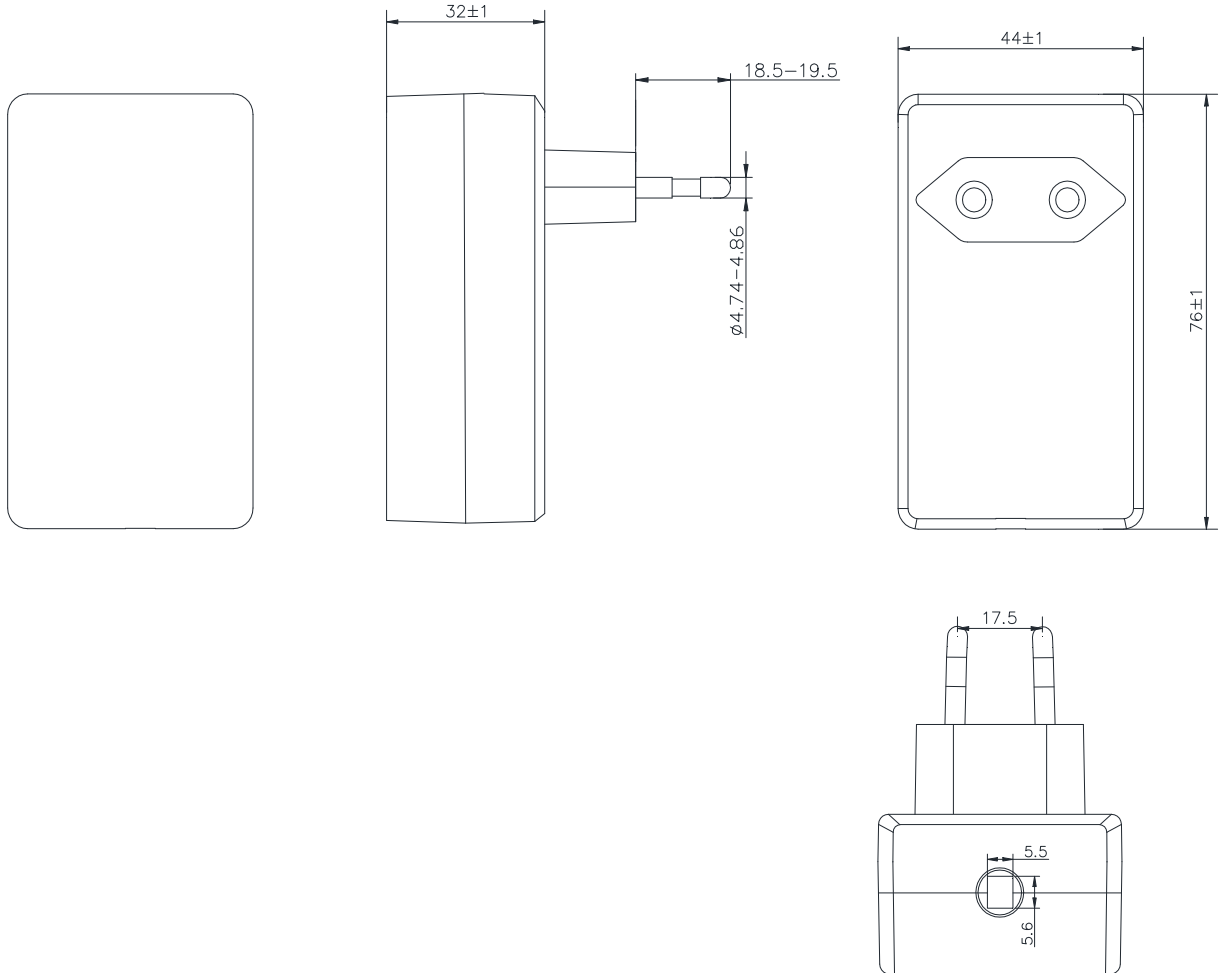
H. INSULATION RASISTANCE TESTER : YD2681A



## PRODUCT OUTLINE DIMENSION

Nit : mm

Tolerance :  $\pm 0.5$



### 13、WEIGHT:

The weight of the power supply shall be about 112 g.

### 14、MECHANICAL REQUIREMENT:

The power supply size: L77\*W45\*H33mm.

### 15、COLOUR:

Black     White

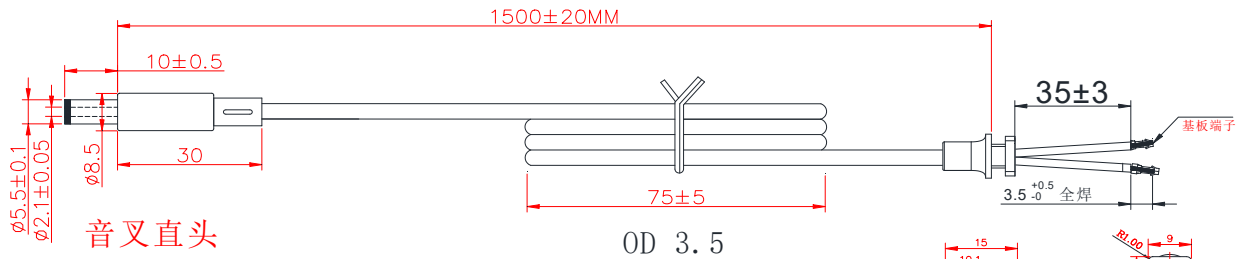


XXXX株式会社



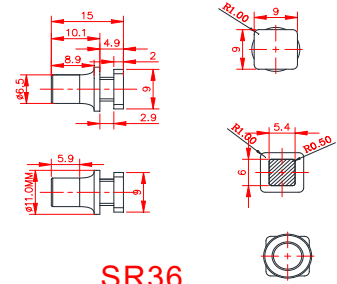
# DC CORD

Unit : mm



NOTE:

1. 线材:UL 2464 22AWG VW-1 80°C 300V
2. 颜色:黑色
3. 极性:黑色线 —●— 红色线
4. 拉力试验:吊重20LBS, 60秒SR位移小于2mm;
5. 摇摆试验:吊重500g, 每分钟35~40次, 120° 摇摆至少500次;
6. 线材硬度:DUROMETER TYPE A 70±10;



XXXX株式会社

# RATING LABEL

Unit:mm

Tolerance:+0/-0.2mm

 직류전원장치(SMPS)

모델명: XSG-1202000HEK

정격입력: 100-240VAC 50/60Hz 0.8A

정격출력: DC12V 2A

제조원: Shenzhen Sunshine Technological Co.,Ltd.

A/S연락처:XXXXX

 HU101011-20003A

R-R-XSC-XSG-1203000HEK

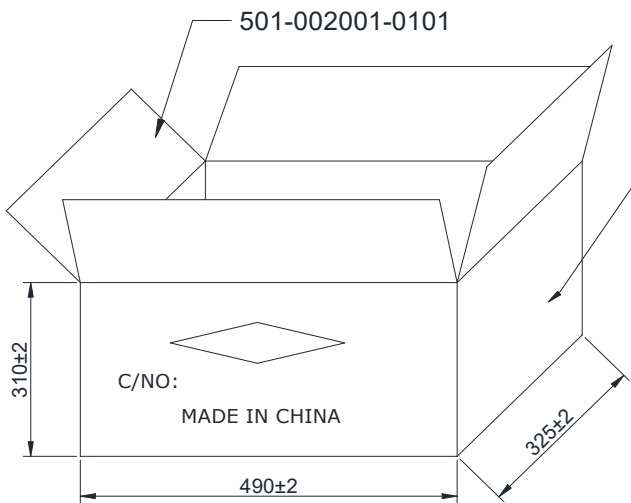
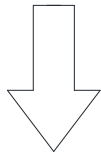
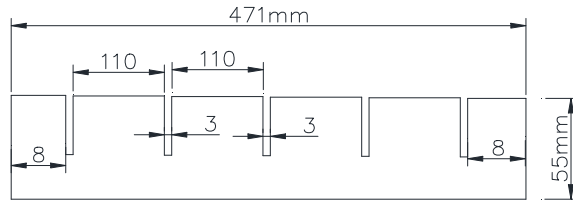
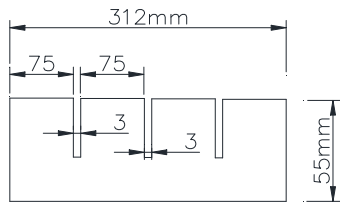
제조년월:    년    월



Made In China



# RATING LABEL



P.O:  
P/N:  
QTY: PCS  
N.W.: KGS  
G.W.: KGS

**NOTE:**

1. PE袋刀卡包装，每箱包装80台。
2. PK箱標示尺寸為外部尺寸
3. PK箱印前後相同,左右相同,印刷顏色為黑色



XXXX株式会社

