

PRODUCT: TFT TOUCH MODULE

MODULE NO.: WKS101WX001-WCT

SUPPLIER: WKS Technology Co.,LTD

DATE: Jun 8, 2019

SPECIFICATION

Revision: 0.1

WKS101WX001-WCT

This module uses ROHS material

This specification may change without prior notice in order to improve performance or quality. Please contact WKS R&D department for updated specification and product status before design for this product or release of this order.

<i>WRITTEN BY</i>	<i>CHECKED BY</i>	<i>APPROVED BY</i>
<i>Jason</i>	<i>Eric</i>	<i>Henry</i>

REVISION RECORD

REV NO.	REV DATE	CONTENTS	REMARKS
0.0	2019-06-08	First release	Preliminary

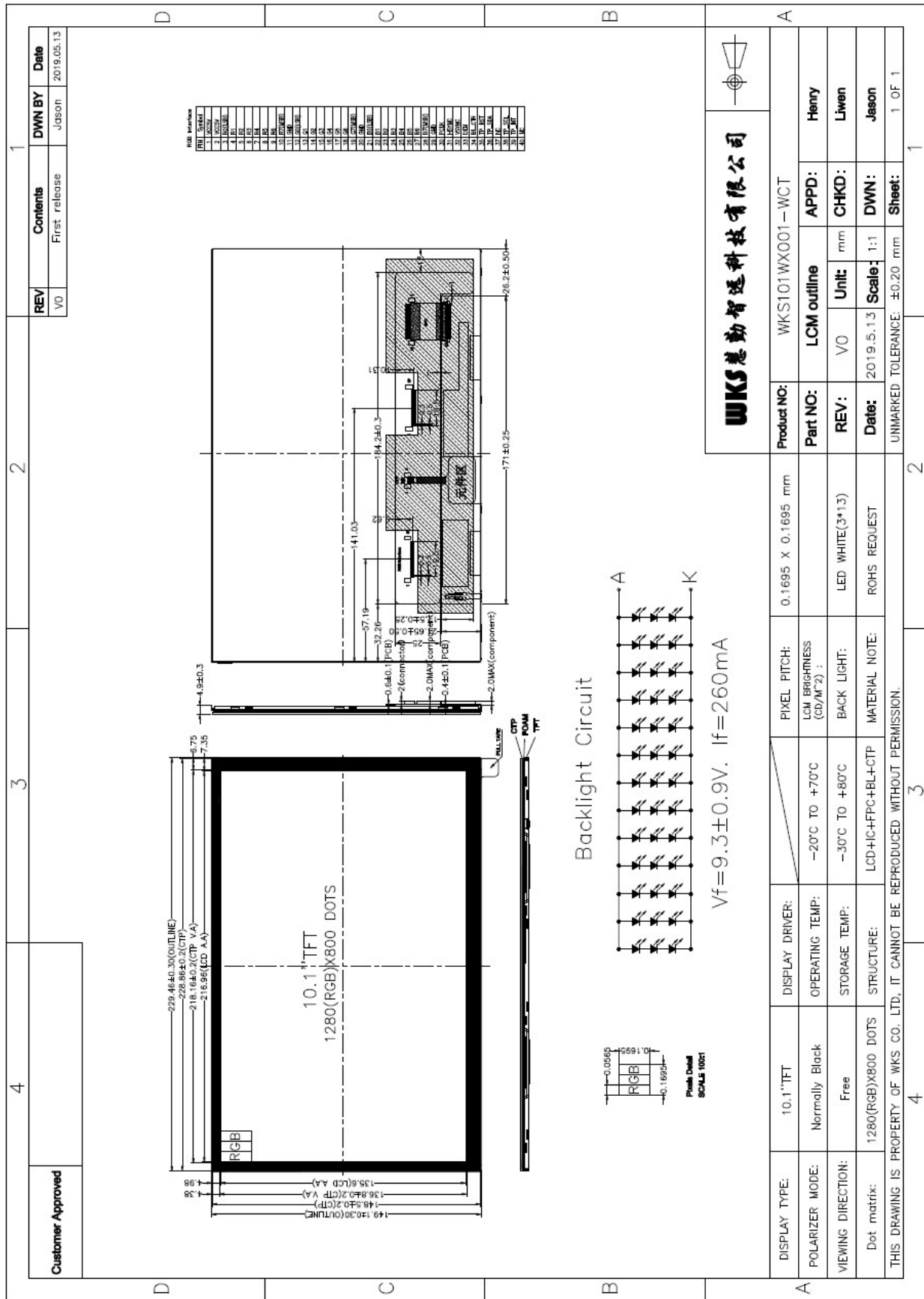
CONTENTS

- 1、 GENERAL INFORMATION**
- 2、 EXTERNAL DIMENSIONS**
- 3、 ABSOLUTE MAXIMUM RATINGS**
- 4、 ELECTRICAL CHARACTERISTICS**
- 5、 BACKLIGHT CHARACTERISTICS**
- 6、 CTP CHARACTERISTICS**
- 7、 ELECTRO-OPTICAL CHARACTERISTICS**
- 8、 INTERFACE DESCRIPTION**
- 9、 INPUT TIMING**
- 10、 RELIABILITY TEST CONDITIONS**
- 11、 INSPECTION CRITERION**

1、GENERAL INFORMATION

<i>Item of general information</i>	<i>Contents</i>		<i>Unit</i>
<i>LCD Display Size (Diagonal)</i>	<i>10.1</i>		<i>inch</i>
<i>Module Structure</i>	<i>LCD Display + CTP Touch + PCB</i>		-
<i>LCD Display Type</i>	<i>TFT/TRANSMISSIVE</i>		-
<i>LCD Display Mode</i>	<i>Normally Black</i>		-
<i>Recommended Viewing Direction</i>	<i>Free</i>		-
<i>Gray inversion Direction</i>	<i>Free</i>		-
<i>Module size (W×H×T)</i>	<i>229.46×149.10×4.90</i>		<i>mm</i>
<i>Active area (W×H)</i>	<i>216.96×135.60</i>		<i>mm</i>
<i>Number of pixels (Resolution)</i>	<i>1280RGB×800</i>		<i>pixel</i>
<i>Pixel pitch (W×H)</i>	<i>0.1695×0.1695</i>		<i>mm</i>
<i>Color Pixel Arrangement</i>	<i>RGB Stripe</i>		-
<i>Module Interface Type</i>	<i>LCD</i>	<i>RGB Interface</i>	-
	<i>CTP</i>	<i>I2C interface</i>	-
<i>Module Input voltage</i>	<i>5.0V</i>		<i>V</i>
<i>Module Power consumption</i>	<i>-</i>		<i>mA</i>
<i>Color Numbers</i>	<i>16.7M</i>		-
<i>Backlight Type</i>	<i>White LED</i>		-

2、EXTERNAL DIMENSIONS



3、ABSOLUTE MAXIMUM RATINGS

<i>Parameter of absolute maximum ratings</i>	<i>Symbol</i>	<i>Min</i>	<i>Max</i>	<i>Unit</i>
<i>Operating temperature</i>	<i>T_{op}</i>	-20	70	°C
<i>Storage temperature</i>	<i>T_{st}</i>	-30	80	°C
<i>Humidity</i>	<i>RH</i>	-	90%(Max 60°C)	RH

Note: The absolute maximum rating values of this product are not allowed to be exceeded at any times. Should a module be used with any of the absolute maximum ratings exceeded, the characteristics of the module may not be recovered, or in an extreme case, the module may be permanently destroyed.

4、ELECTRICAL CHARACTERISTICS(DC CHARACTERISTICS)

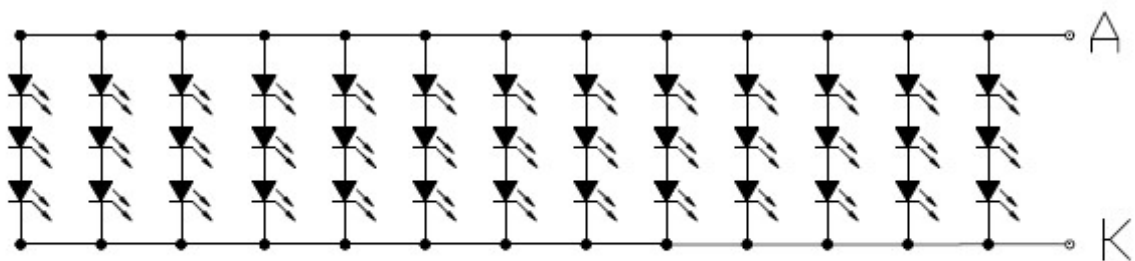
<i>Parameter of DC characteristics</i>	<i>Symbol</i>	<i>Min.</i>	<i>Typ.</i>	<i>Max.</i>	<i>Unit</i>
<i>PCB operating voltage</i>	<i>VCC5V</i>	-	5.0	-	V
<i>LCD operating voltage</i>	<i>VDD</i>	2.3	2.5	3.6	V
<i>Input voltage 'H' level</i>	<i>VIH</i>	0.8*VDD	-	3.6	V
<i>Input voltage 'L' level</i>	<i>VIL</i>	0	-	0.2*VDD	V

5、BACKLIGHT CHARACTERISTICS

Item of backlight characteristics	Symbol	Min.	Typ.	Max.	Unit	Remark
Forward Voltage	V_f	8.4	9.3	10.2	V	Note1
Forward Current	I_f	-	260	-	mA	-
Number of LED	-	-	$3*13=39$	-	Piece	-
LED Connection mode	P/S	-	Serial/Parallel	-	-	-
Lifetime of LED	-	-	20000	-	hour	Note2

Note:

- Note1: The LED Supply Voltage is defined by the number of LED at $T_a=25^\circ\text{C}$ and $I_f=260\text{mA}$.
- Note2: The LED lifetime define as the estimated time to 50% degradation of initial luminous. The LED lifetime could be decreased if operating I_f is larger than 260mA.
- Backlight control via the BL_CTR pin or PWM signal.
- Backlight circuit:



$$V_f = 9.3 \pm 0.9\text{V}. \quad I_f = 260\text{mA}$$

6、CTP CHARACTERISTICS

<i>Item of CTP characteristics</i>	<i>Specification</i>	<i>Unit</i>	<i>Remark</i>
<i>Panel Type</i>	<i>Glass Cover + Glass Sensor</i>	-	-
<i>Resolution</i>	<i>1280 × 800</i>	<i>pixel</i>	-
<i>Surface Hardness</i>	<i>6H</i>	-	-
<i>Transparency</i>	<i>≥86%</i>	-	-
<i>Driver IC</i>	<i>GT9271</i>	-	-
<i>Interface Type</i>	<i>I2C</i>	-	-
<i>Support Points</i>	<i>10</i>	-	-
<i>Sampling Rate</i>	<i>20~100</i>	<i>Hz</i>	-
<i>Supply voltage</i>	<i>3.3</i>	<i>V</i>	-

7、ELECTRO-OPTICAL CHARACTERISTICS

Item of electro-optical characteristics		Symbol	Condition	Min.	Typ.	Max.	Unit	Remark	Note
Response time		$Tr+Tf$	$\theta=0$ $\phi=0$ $Ta=25^{\circ}C$	-	25	50	ms	FIG 1.	4
Contrast Ratio		CR		-	600	-	-	FIG 2.	1
Luminance uniformity		$\delta WHITE$		-	80	-	%	FIG 2.	3
Surface Luminance		Lv		-	250	-	cd/m ²	FIG 2.	2
CIE (x, y) chromaticity	White	White x	$\theta=0$ $\phi=0$ $Ta=25^{\circ}C$	0.27	0.31	0.35	-	FIG 2.	5
		White y		0.28	0.32	0.36			
Viewing angle range	$\phi=90$ (12 o'clock)		CR ≥ 10	75	85	-	deg	FIG 3.	6
	$\phi=270$ (6 o'clock)			75	85	-	deg		
	$\phi=0$ (3 o'clock)			75	85	-	deg		
	$\phi=180$ (9 o'clock)			75	85	-	deg		
NTSC ratio		-	-	-	50	-	%	-	-

Note 1. Contrast Ratio(CR) is defined mathematically by the following formula. For more information see FIG 2.:

$$\text{Contrast Ratio(CR)} = \frac{\text{Average Surface Luminance with all white pixels(P1,P2,P3,P4,P5,P6,P7,P8,P9)}}{\text{Average Surface Luminance with all black pixels(P1,P2,P3,P4,P5,P6,P7,P8,P9)}}$$

Note 2. Surface luminance is the LCD surface from the surface with all pixels displaying white. For more information see FIG 2.

$$Lv = \text{Average Surface Luminance with all white pixels (P1,P2,P3,P4,P5,P6,P7,P8,P9)}$$

Note 3. The uniformity in surface luminance ($\delta WHITE$) is determined by measuring luminance at each test position 1 through 9, and then dividing the maximum luminance of 9 points luminance by minimum luminance of 9 points luminance. For more information see FIG 2.

$$\delta_{\text{WHITE}} = \frac{\text{Minimum Surface Luminance with all white pixels (P1, P2, P3, P4, P5, P6, P7, P8, P9)}}{\text{Maximum Surface Luminance with all white pixels (P1, P2, P3, P4, P5, P6, P7, P8, P9)}}$$

Note 4. The response time is defined as the LCD optical switching time interval between “White” state and “Black” state. Rise time (T_{ON}) is the time between photo detector output intensity changed from 90% to 10%. And fall time (T_{OFF}) is the time between photo detector output intensity changed from 10% to 90%. For more information see FIG 1.

Note 5. CIE (x, y) chromaticity, The x,y value is determined by screen active area position 5. For more information see FIG 2.

Note 6. Viewing angle is the angle at which the contrast ratio is greater than a specific value. For TFT module, the specific value of contrast ratio is 10. The angles are determined for the horizontal or x axis and the vertical or y axis with respect to the z axis which is normal to the LCD surface. For more information see FIG 3.

Note 7. For Viewing angle and response time testing, the testing data is base on Autronic-Melchers’s ConoScope. Series Instruments. For contrast ratio, Surface Luminance, Luminance uniformity and CIE, the testing data is base on BM-7 photo detector.

Note 8. For TN type TFT transmissive module, Gray scale reverse occurs in the direction of panel viewing angle.

FIG.1. The definition of Response Time

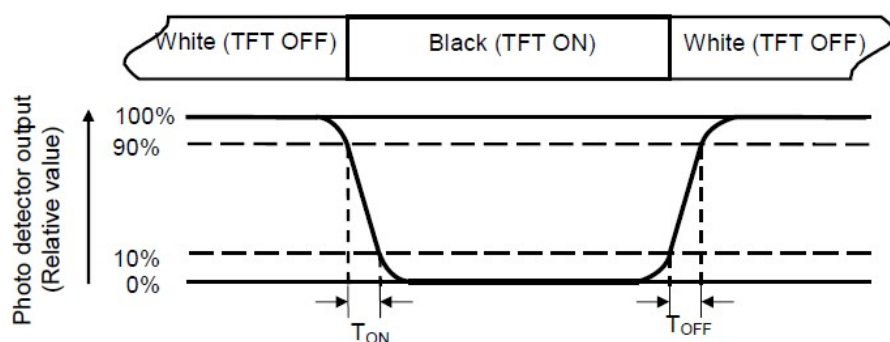


FIG.2. Measuring method for Contrast ratio, surface luminance, Luminance uniformity,

CIE (x , y) chromaticity

A : H/6 ;

B : V/6 ;

H,V : Active Area(AA) size

Measurement instrument: BM-7; Light spot size=5mm, 350mm distance from the LCD surface to detector lens.

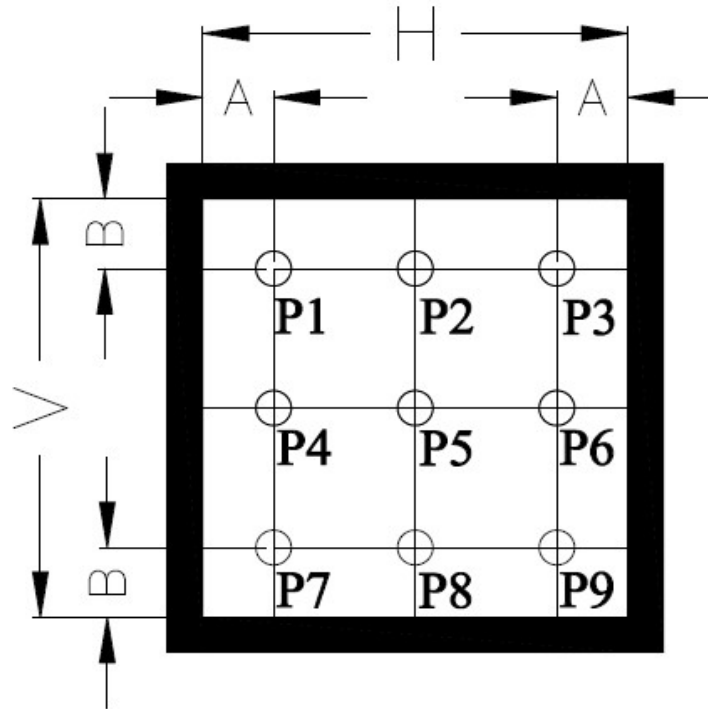
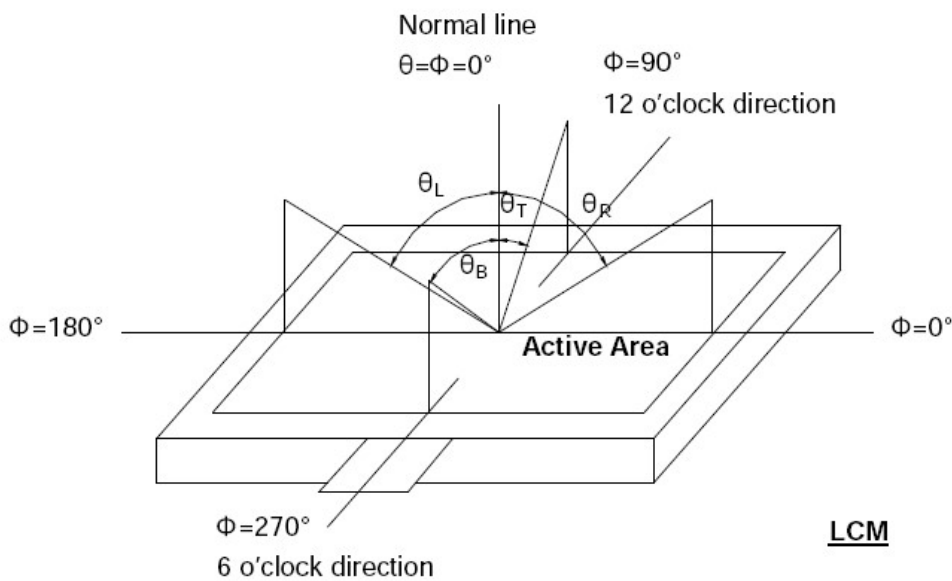


FIG.3. The definition of viewing angle



8、INTERFACE DESCRIPTION

NO.	Symbol	I/O	DESCRIPTION
1~2	VCC5V	P	Module Power supply (5V Typ.)
3~10	R0~R7	I	8bit digital Red data input(R0:LSB; R7:MSB)
11	GND	P	Power ground
12~19	G0~G7	I	8bit digital Green data input(G0:LSB; G7:MSB)
20	GND	P	Power ground
21~28	B0~B7	I	8bit digital Blue data input(B0:LSB; B7:MSB)
29	GND	P	Power ground
30	DCLK	I	Clock signal.
31	HSYNC	I	Horizontal Sync input.
32	VSYNC	I	Vertical Sync input.
33	DEN	I	Data input Enable.
34	BL_CTR	I	Backlight control pin
35	TP_RST	I	CTP external reset signal, Low is active
36	TP_SDA	I/O	CTP I2C data input and output
37	NC	-	No connection
38	TP_SCL	I	CTP I2C clock input
39	TP_INT	I/O	CTP External interrupt to the host
40	NC	-	No connection

Application Note:

- 1、 For RGB565 Input Format: R3~R7, G2~G7, B3~B7 be used.
- 2、 For RGB666 Input Format: R2~R7, G2~G7, B2~B7 be used.

9、INPUT TIMING

RGB Input Timing Table

Parameter	Symbol	Value			Unit
		Min.	Typ.	Max.	
DCLK frequency@ Frame rate=60Hz	DCLK	68.9	71.1	73.4	MHz
Horizontal display area	thd	1280			DCLK
1 Horizontal Line	th	1340	1440	1470	DCLK
HSYNC pulse width	thpw	-	10	-	DCLK
HSYNC Back Porch(Blanking)	thb	-	80	-	DCLK
HSYNC Front Porch	thfp	-	70	-	DCLK
Vertical display area	tvd	800			H
VSYNC period time	tv	815	823	833	H
VSYNC pulse width	tpw	-	3	-	H
VSYNC Back Porch(Blanking)	tvb	-	10	-	H
VSYNC Front Porch	tvfp	-	10	-	H

10、RELIABILITY TEST CONDITIONS

No.	Test Item	Test Condition
1	High Temperature Storage	80°C/120 hours
2	Low Temperature Storage	-30°C/120 hours
3	High Temperature Operating	70°C/120 hours
4	Low Temperature Operating	-20°C/120 hours
5	Temperature Cycle Storage	-0°C(30min.)~25(5min.)~50°C(30min.)×10cycles

A、Inspection after test:

Inspection after 2~4 hours storage at room temperature, the sample shall be free from defects:

- Air bubble in the LCD;
- Sealleak;
- Non-display;
- Missing segments;
- Glass crack;
- Current is twice higher than initial value.

B、Remark:

- The test samples should be applied to only one test item.
- Sample size for each test item is 5~10pcs.
- Failure Judgment Criterion: Basic Specification, Electrical Characteristic, Mechanical Characteristic, Optical Characteristic.

11、INSPECTION CRITERION

This specification is made to be used as the standard of acceptance/rejection criteria for TFT-LCD/IPS TFT-LCD module product, and this specification is applicable only in the case that the size of module equal to or exceed than 4.3 inch.

11.1 Sample plan

Sampling plan according to GB/T2828.1-2003/ISO 2859-1: 1999 and ANSI/ASQC

Z1.4-1993,normal level 2 and based on:

Major defect: AQL 0.65

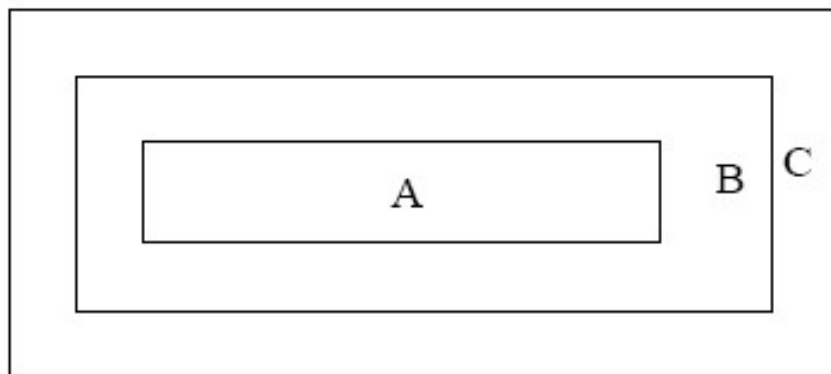
Minor defect: AQL 1.5

11.2 Inspection condition

Viewing distance for cosmetic inspection is about 30cm with bare eyes, and under an environment of 20~40W light intensity, all directions for inspecting the sample should be within 45° against perpendicular line. (Normal temperature 20~25 °C and normal humidity 60 ±15%RH)

11.3 Definition of Inspection Item.

A、 Definition of inspection zone in LCD.



Zone A: character/Digit area

Zone B: viewing area except Zone A (Zone A + Zone B=minimum Viewing area)

Zone C: Outside viewing area (invisible area after assembly in customer's product)

Fig.1 Inspection zones in an LCD

Note: As a general rule, visual defects in Zone C are permissible, when it is no trouble for quality and assembly of customer's product.

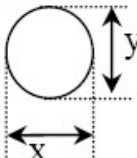
B、 Definition of some visual defect

<i>Bright dot</i>	<i>Because of losing all or part function, bad pixel dots appear bright and the size is more than 50% of one dot in which LCD panel is displaying under black pattern.</i>
<i>Dark dot</i>	<i>Dots appear dark and unchanged in size in which LCD panel is displaying under pure red, green, blue picture, or pure whiter picture.</i>

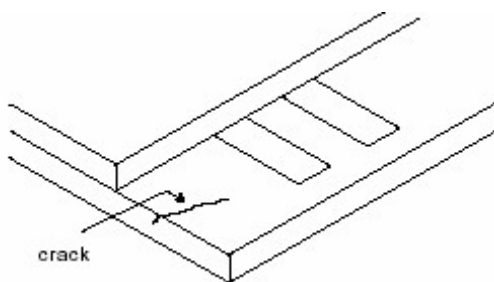
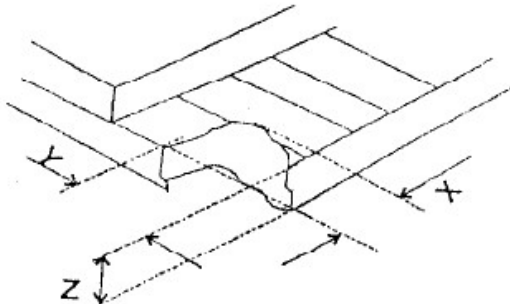
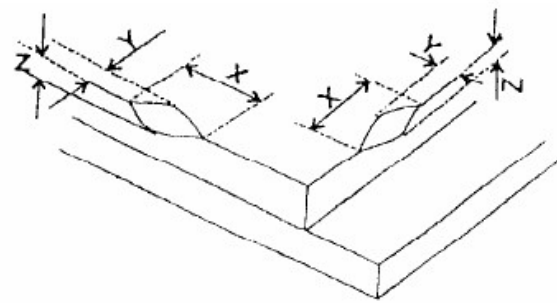
11.4 Major Defect

<i>Item No.</i>	<i>Items to be inspected</i>	<i>Inspection standard</i>	<i>Classification of defects</i>
<i>1</i>	<i>Functional defects</i>	<i>1) No display 2) Display abnormally 3) Missing vertical, horizontal segment 4) Short circuit 5) Excess power consumption 6) Backlight no lighting, flickering and abnormal lighting</i>	<i>major</i>
<i>2</i>	<i>Missing</i>	<i>Missing component</i>	
<i>3</i>	<i>Outline dimension</i>	<i>Overall outline dimension beyond the drawing is not allowed</i>	

5、Minor Defect

Item No.	Items to be inspected	Inspection standard					Classification of defects	
1	Bright dot /dark dot defect	Zone		Acceptable Qty			C	Minor
A+B				4.3" ~ 7"	7~10.1"	>10.1"		
Bright pixel dot		1	2	3	Acceptable			
Dark pixel dot		4	4	4				
2bright dots adjacent		0	0	0				
2dark dots adjacent		0	0	0				
Total bright and dark dots		5	6	7				
<p>Note: Minimum distance between defective dots is more than 5mm; Pixel dots' function is normal, but bright dots caused by foreign material and other reasons are judged by the dot defect of 5.2.</p>								
2	<p>Dot defect</p>  <p>$\Phi = (x+y) / 2$</p>	Zone		Acceptable Qty			C	Minor
A+B				4.3"~7"	7~10.1"	>10.1"		
$\Phi \leq 0.2$		Acceptable	Acceptable	Acceptable				
$0.2 < \Phi \leq 0.5$		4	5	6				
$\Phi > 0.5$		0	0	0				
<p>Note:</p> <ol style="list-style-type: none"> Minimum distance between defective dots is more than 5 mm; The quantity of defect is zero in operating condition. 								
3	Linear defect	Zone		Acceptable Qty			C	Minor
A+B				4.3"~7"	7~10.1"	>10.1"		
Length	Width	4.3"~7"	7~10.1"	>10.1"				
Ignore	$W \leq 0.05$	Acceptable	Acceptable	Acceptable				
$L \leq 5.0$	$0.05 < W \leq 0.1$	4	5	6				
$L > 5.0$	$W > 0.1$	0	0	0				

<p>4</p>	<p>Polarizer defect</p>	<p>5.4.1 Polarizer Position (i) Shifting in position should not exceed the glass outline dimension. (ii) Incomplete covering of the viewing area due to shifting is not allowed.</p> <p>5.4.2 Dirt on polarizer Dirt which can be wiped easily should be acceptable.</p> <p>5.4.3 Polarizer Dent & Air bubble</p> <table border="1" data-bbox="464 517 1235 837"> <thead> <tr> <th colspan="2" rowspan="2">Zone Size(mm)</th> <th colspan="3">Acceptable Qty</th> <th rowspan="2">C</th> </tr> <tr> <th colspan="3">A+B</th> </tr> <tr> <th colspan="2"></th> <th>4.3"~7"</th> <th>7~10.1"</th> <th>>10.1"</th> <th rowspan="3">Acceptable</th> </tr> </thead> <tbody> <tr> <td colspan="2">$\Phi \leq 0.2$</td> <td>Acceptable</td> <td>Acceptable</td> <td>Acceptable</td> </tr> <tr> <td colspan="2">$0.2 < \Phi \leq 0.5$</td> <td>4</td> <td>5</td> <td>6</td> </tr> <tr> <td colspan="2">$\Phi > 0.5$</td> <td>0</td> <td>0</td> <td>0</td> <td></td> </tr> </tbody> </table> <p>5.4.4 Polarizer scratch (i) If the polarizer scratch can be seen after cover assembling or in the operating condition, judge by the linear defect of 5.3. (ii) If the polarizer scratch can be seen only in non-operating condition or some special angle, judge by the following:</p> <table border="1" data-bbox="464 1043 1235 1444"> <thead> <tr> <th colspan="2" rowspan="2">Zone Size (mm)</th> <th colspan="3">Acceptable Qty</th> <th rowspan="2">C</th> </tr> <tr> <th colspan="3">A+B</th> </tr> <tr> <th>Length</th> <th>Width</th> <th>4.3"~7"</th> <th>7~10.1"</th> <th>>10.1"</th> <th rowspan="3">Acceptable</th> </tr> </thead> <tbody> <tr> <td>Ignore</td> <td>$W \leq 0.05$</td> <td>Acceptable</td> <td>Acceptable</td> <td>Acceptable</td> </tr> <tr> <td>$1.0 < L \leq 5.0$</td> <td>$0.05 < W \leq 0.20$</td> <td>4</td> <td>5</td> <td>6</td> </tr> <tr> <td>$L > 5.0$</td> <td>$W > 0.2$</td> <td>0</td> <td>0</td> <td>0</td> <td></td> </tr> </tbody> </table>	Zone Size(mm)		Acceptable Qty			C	A+B					4.3"~7"	7~10.1"	>10.1"	Acceptable	$\Phi \leq 0.2$		Acceptable	Acceptable	Acceptable	$0.2 < \Phi \leq 0.5$		4	5	6	$\Phi > 0.5$		0	0	0		Zone Size (mm)		Acceptable Qty			C	A+B			Length	Width	4.3"~7"	7~10.1"	>10.1"	Acceptable	Ignore	$W \leq 0.05$	Acceptable	Acceptable	Acceptable	$1.0 < L \leq 5.0$	$0.05 < W \leq 0.20$	4	5	6	$L > 5.0$	$W > 0.2$	0	0	0		<p>Minor</p>
Zone Size(mm)		Acceptable Qty			C																																																												
		A+B																																																															
		4.3"~7"	7~10.1"	>10.1"	Acceptable																																																												
$\Phi \leq 0.2$		Acceptable	Acceptable	Acceptable																																																													
$0.2 < \Phi \leq 0.5$		4	5	6																																																													
$\Phi > 0.5$		0	0	0																																																													
Zone Size (mm)		Acceptable Qty			C																																																												
		A+B																																																															
Length	Width	4.3"~7"	7~10.1"	>10.1"	Acceptable																																																												
Ignore	$W \leq 0.05$	Acceptable	Acceptable	Acceptable																																																													
$1.0 < L \leq 5.0$	$0.05 < W \leq 0.20$	4	5	6																																																													
$L > 5.0$	$W > 0.2$	0	0	0																																																													
<p>5</p>	<p>MURA</p>	<p>Using 3% ND filter, it's NG if it can be seen in R,G,B picture.</p>	<p>Minor</p>																																																														
	<p>White/Black dot (MURA)</p>	<p>Visible under: ND3%; $D \leq 0.15mm$, Acceptable; $0.15mm < D \leq 0.5mm$, $N \leq 4$; $D > 0.5mm$, Not allowable.</p>																																																															

6	Glass defect	<p>(i) Crack Cracks are not allowed.</p> 	Minor								
		<p>(ii) TFT chips on corner</p>  <table border="1" style="width: 100%; text-align: center;"> <thead> <tr> <th>X</th> <th>Y</th> <th>Z</th> <th>Acceptable</th> </tr> </thead> <tbody> <tr> <td>≤ 3.0</td> <td>≤ 3.0</td> <td>Not more than the thickness of glass</td> <td>$N \leq 3$</td> </tr> </tbody> </table> <p>Chips on the corner of terminal shall not be allowed to extend into the ITO pad or expose perimeter seal.</p>	X	Y	Z	Acceptable	≤ 3.0	≤ 3.0	Not more than the thickness of glass	$N \leq 3$	Minor
		X	Y	Z	Acceptable						
≤ 3.0	≤ 3.0	Not more than the thickness of glass	$N \leq 3$								
<p>(iii) Usual surface crack</p>  <table border="1" style="width: 100%; text-align: center;"> <thead> <tr> <th>X</th> <th>Y</th> <th>Z</th> <th>Acceptable</th> </tr> </thead> <tbody> <tr> <td>≤ 1.5</td> <td>≤ 1.5</td> <td>Not more than the thickness of glass</td> <td>$N \leq 4$</td> </tr> </tbody> </table> <p>It is only applicable to the upper glass of LCD.</p>	X	Y	Z	Acceptable	≤ 1.5	≤ 1.5	Not more than the thickness of glass	$N \leq 4$	Minor		
X	Y	Z	Acceptable								
≤ 1.5	≤ 1.5	Not more than the thickness of glass	$N \leq 4$								

11.6 Module Cosmetic Criteria

Item No.	Items to be inspected	Inspection Standard	Classification of defects
1	Difference in Spec.	Not allowable	Major
2	Pattern peeling	No substrate pattern peeling and floating	Major
3	Soldering defects	No soldering missing	Major
		No soldering bridge	Major
		No cold soldering	Minor
4	Resist flaw on PCB	Visible copper foil ($\Phi 0.5$ mm or more) on substrate pattern is not allowed	Minor
5	FPC gold finger	No dirt, breaking, oxidation lead to black	Major
6	Backlight plastic frame	No deformation, crack, breaking, backlight positioning column breaking, obvious nick.	Minor
7	Marking printing effect	No dark marking, incomplete, deformation lead to unable to judge	Minor
8	Accretion of metallic Foreign matter	No accretion of metallic foreign matter (Not exceed $\Phi 0.2$ mm)	Minor
9	Stain	No stain to spoil cosmetic badly	Minor
10	Plate discoloring	No plate fading, rusting and discoloring	Minor
11	1. Lead parts	a. Soldering side of PCB Solder to form a 'Filet' all around the lead. Solder should not hide the lead form perfectly.	Minor
		b. Components side(In case of 'Through Hole PCB') Solder to reach the Components side of PCB.	Minor
	2. Flat packages	Either 'Toe'(A) or 'Seal'(B)of the lead to be covered by "Filet". Lead form to be assume over Solder.	Minor
	3. Chips	$(3/2) H \geq h \geq (1/2) H$	Minor
4. Solder ball/Solder splash	a. The spacing between solder ball and the conductor or solder pad $h \geq 0.13$ mm. The diameter of solder ball $d \leq 0.15$ mm.	Minor	
	b. The quantity of solder balls or solder splashes isn't beyond 5 in 600 mm ² .	Minor	
	c. Solder balls/Solder splashes do not violate minimum electrical clearance.	Major	

